



Sistema automático de  
lubricación Winche

**Pique de  
Casapalca**

# Detalle de la plancha soporte

- Tablero principal
- Plancha de acero
- Pulmón
- Asas
- Válvula dosificadora
- Válvula progresiva
- Conducto de grasa
- Plancha cincada
- Conductos de aire, que con la presión se combina con la grasa y atomiza la grasa en una corrida de abanico sobre los dientes, después de la aplicación. Corre el aire para limpiar las toberas



# Vista de atomizadores

- Los atomizadores recomendamos que se instalen por pares y la distancia entre ellos deberá ser adecuada al diente del piñón y catalina para garantizar un bañado completo del diente con el rocío del lubricante.



# Tablero de control



- Caja de control de tiempos y fallas
- Contactor de seguridad
- Timer de seguridad
- Válvula de aire
- Borneras
- Llave general del tablero

# Control de tiempos

- Cirval provee la siguiente documentación para el control de tiempo de lubricación e intervalos o frecuencias activando o desactivando las botones que están presentados la derecha.



AJUSTES DE MODOS DE FUNCIONAM. Y TIEMPOS  
PARA TABLERO DE COMANDO CC-3000

TIEMPO DE ESPERA				RANGO	
SW1	SW2	SW3	SW4	SW5-SW7	SELECCION
OFF	OFF	OFF	OFF	1 min	1.0 hora
OFF	OFF	ON	ON	2 min	1 hora
OFF	OFF	ON	OFF	3 min	2 horas
OFF	ON	ON	ON	4 min	3 horas
OFF	ON	ON	OFF	5 min	4 horas
OFF	ON	OFF	ON	6 min	5 horas
OFF	ON	OFF	OFF	7 min	6 horas
ON	ON	ON	ON	8 min	7 horas
ON	ON	ON	OFF	9 min	8 horas
ON	ON	OFF	ON	10 min	9 horas
ON	ON	OFF	OFF	11 min	10 horas
ON	OFF	ON	ON	12 min	11 horas
ON	OFF	ON	OFF	13 min	12 horas
ON	OFF	OFF	ON	14 min	13 horas
ON	OFF	OFF	OFF	15 min	14 horas
ON	OFF	ON	ON	16 min	15 horas
ON	OFF	ON	OFF	17 min	16 horas
ON	OFF	OFF	ON	18 min	17 horas
ON	OFF	OFF	OFF	19 min	18 horas
ON	OFF	ON	ON	20 min	19 horas
ON	OFF	ON	OFF	21 min	20 horas
ON	OFF	OFF	ON	22 min	21 horas
ON	OFF	OFF	OFF	23 min	22 horas
ON	OFF	ON	ON	24 min	23 horas
ON	OFF	ON	OFF	25 min	24 horas
ON	OFF	OFF	ON	26 min	25 horas
ON	OFF	OFF	OFF	27 min	26 horas
ON	OFF	ON	ON	28 min	27 horas
ON	OFF	ON	OFF	29 min	28 horas
ON	OFF	OFF	ON	30 min	29 horas
ON	OFF	OFF	OFF	31 min	30 horas

TIEMPO DE DESARON				RANGO	
SW1	SW2	SW3	SW4	SW5-SW7	SELECCION
OFF	OFF	OFF	OFF	4 seg	1 min
OFF	OFF	ON	ON	5 seg	2 min
OFF	OFF	ON	OFF	6 seg	3 min
OFF	ON	ON	ON	7 seg	4 min
OFF	ON	ON	OFF	8 seg	5 min
OFF	ON	OFF	ON	9 seg	6 min
OFF	ON	OFF	OFF	10 seg	7 min
ON	ON	ON	ON	11 seg	8 min
ON	ON	ON	OFF	12 seg	9 min
ON	ON	OFF	ON	13 seg	10 min
ON	ON	OFF	OFF	14 seg	11 min
ON	ON	ON	ON	15 seg	12 min
ON	ON	ON	OFF	16 seg	13 min
ON	ON	OFF	ON	17 seg	14 min
ON	ON	OFF	OFF	18 seg	15 min
ON	ON	ON	ON	19 seg	16 min
ON	ON	ON	OFF	20 seg	17 min
ON	ON	OFF	ON	21 seg	18 min
ON	ON	OFF	OFF	22 seg	19 min
ON	ON	ON	ON	23 seg	20 min
ON	ON	ON	OFF	24 seg	21 min
ON	ON	OFF	ON	25 seg	22 min
ON	ON	OFF	OFF	26 seg	23 min
ON	ON	ON	ON	27 seg	24 min
ON	ON	ON	OFF	28 seg	25 min
ON	ON	OFF	ON	29 seg	26 min
ON	ON	OFF	OFF	30 seg	27 min
ON	ON	ON	ON	31 seg	28 min
ON	ON	ON	OFF	32 seg	29 min
ON	ON	OFF	ON	33 seg	30 min
ON	ON	OFF	OFF	34 seg	31 min
ON	ON	ON	ON	35 seg	32 min
ON	ON	ON	OFF	36 seg	33 min
ON	ON	OFF	ON	37 seg	34 min
ON	ON	OFF	OFF	38 seg	35 min
ON	ON	ON	ON	39 seg	36 min
ON	ON	ON	OFF	40 seg	37 min
ON	ON	OFF	ON	41 seg	38 min
ON	ON	OFF	OFF	42 seg	39 min
ON	ON	ON	ON	43 seg	40 min
ON	ON	ON	OFF	44 seg	41 min
ON	ON	OFF	ON	45 seg	42 min
ON	ON	OFF	OFF	46 seg	43 min
ON	ON	ON	ON	47 seg	44 min
ON	ON	ON	OFF	48 seg	45 min
ON	ON	OFF	ON	49 seg	46 min
ON	ON	OFF	OFF	50 seg	47 min
ON	ON	ON	ON	51 seg	48 min
ON	ON	ON	OFF	52 seg	49 min
ON	ON	OFF	ON	53 seg	50 min
ON	ON	OFF	OFF	54 seg	51 min
ON	ON	ON	ON	55 seg	52 min
ON	ON	ON	OFF	56 seg	53 min
ON	ON	OFF	ON	57 seg	54 min
ON	ON	OFF	OFF	58 seg	55 min
ON	ON	ON	ON	59 seg	56 min
ON	ON	ON	OFF	60 seg	57 min
ON	ON	OFF	ON	61 seg	58 min
ON	ON	OFF	OFF	62 seg	59 min
ON	ON	ON	ON	63 seg	60 min
ON	ON	ON	OFF	64 seg	61 min
ON	ON	OFF	ON	65 seg	62 min
ON	ON	OFF	OFF	66 seg	63 min
ON	ON	ON	ON	67 seg	64 min
ON	ON	ON	OFF	68 seg	65 min
ON	ON	OFF	ON	69 seg	66 min
ON	ON	OFF	OFF	70 seg	67 min
ON	ON	ON	ON	71 seg	68 min
ON	ON	ON	OFF	72 seg	69 min
ON	ON	OFF	ON	73 seg	70 min
ON	ON	OFF	OFF	74 seg	71 min
ON	ON	ON	ON	75 seg	72 min
ON	ON	ON	OFF	76 seg	73 min
ON	ON	OFF	ON	77 seg	74 min
ON	ON	OFF	OFF	78 seg	75 min
ON	ON	ON	ON	79 seg	76 min
ON	ON	ON	OFF	80 seg	77 min
ON	ON	OFF	ON	81 seg	78 min
ON	ON	OFF	OFF	82 seg	79 min
ON	ON	ON	ON	83 seg	80 min
ON	ON	ON	OFF	84 seg	81 min
ON	ON	OFF	ON	85 seg	82 min
ON	ON	OFF	OFF	86 seg	83 min
ON	ON	ON	ON	87 seg	84 min
ON	ON	ON	OFF	88 seg	85 min
ON	ON	OFF	ON	89 seg	86 min
ON	ON	OFF	OFF	90 seg	87 min
ON	ON	ON	ON	91 seg	88 min
ON	ON	ON	OFF	92 seg	89 min
ON	ON	OFF	ON	93 seg	90 min
ON	ON	OFF	OFF	94 seg	91 min
ON	ON	ON	ON	95 seg	92 min
ON	ON	ON	OFF	96 seg	93 min
ON	ON	OFF	ON	97 seg	94 min
ON	ON	OFF	OFF	98 seg	95 min
ON	ON	ON	ON	99 seg	96 min
ON	ON	ON	OFF	100 seg	97 min
ON	ON	OFF	ON	101 seg	98 min
ON	ON	OFF	OFF	102 seg	99 min
ON	ON	ON	ON	103 seg	100 min



# Partes secundarias del sistema

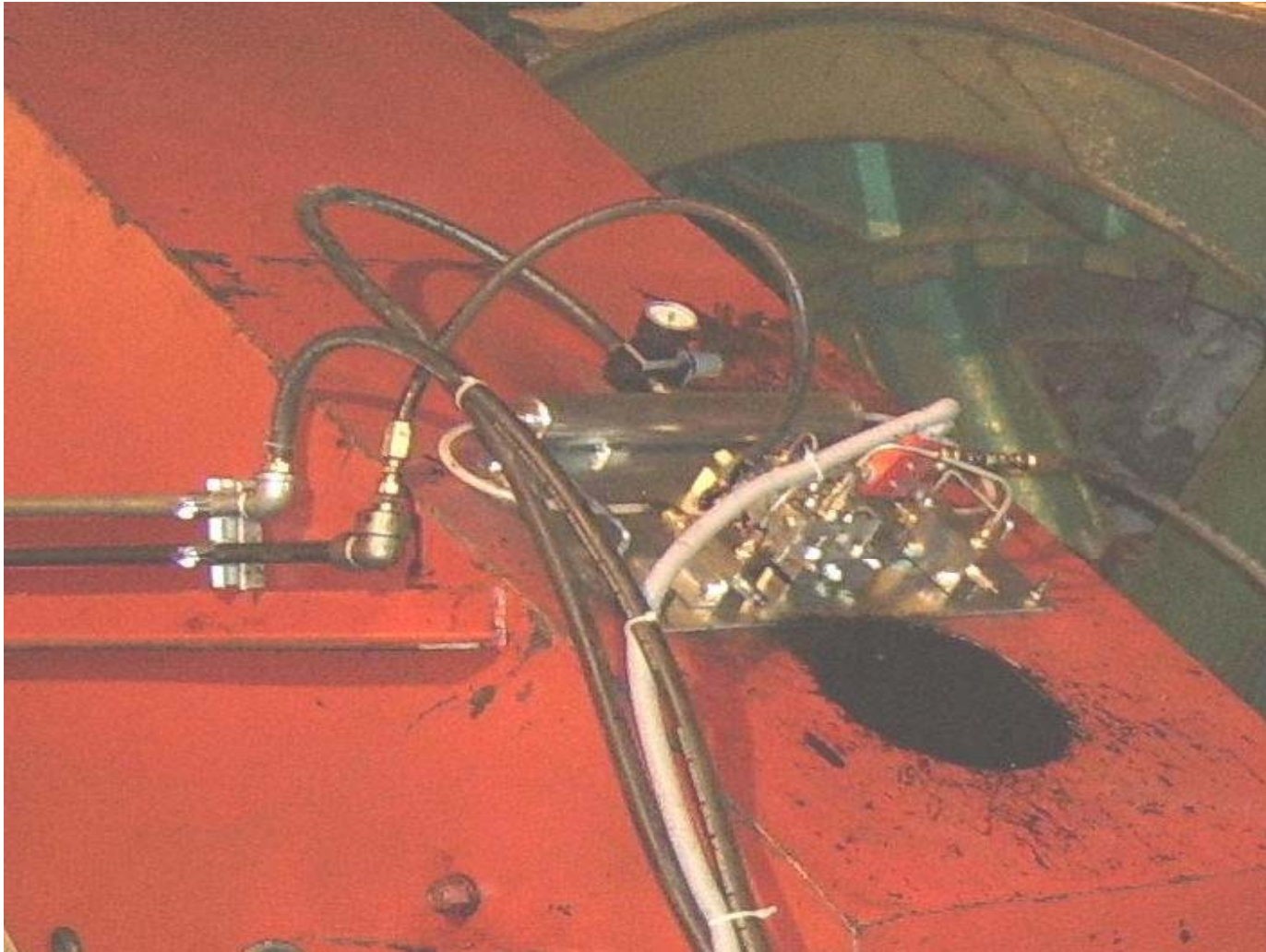
- Regulador de aire, manómetros y filtros de aire y grasa, acoples de alta presión, acople rápidos.



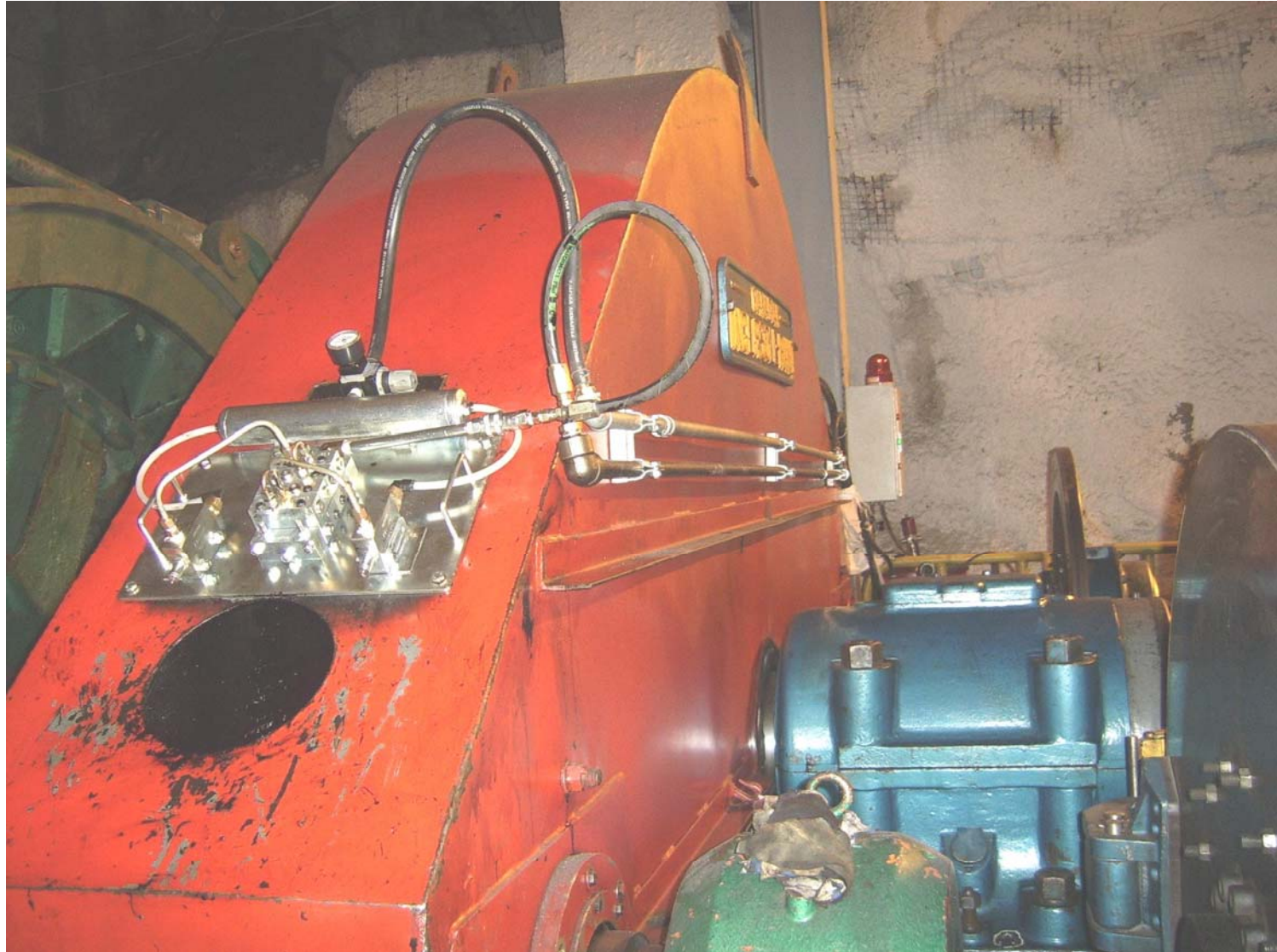
# Tablero instalado en winche



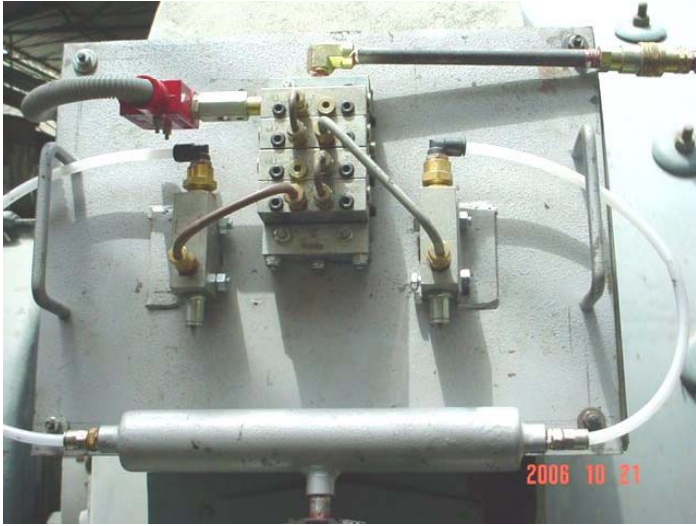
# Detalle de tablero



# Vista del tablero lubricando



# Colage de la instalación



# Ing. calibrando Sensores



# Visto bueno de la instalación



# Tablero de control

- En la presente vista les presentamos el cerebro donde se programa el tiempo de lubricación como el tiempo entre lubricaciones, el protocolo de lubricación determinará el óptimo, es decir la cantidad de grasa administrada, el tiempo entre una lubricación y otra y todo dentro de una capa de grasa suficiente y sin desperdicio.



# Grasas recomendadas

- Schaeffer All Silver Streak Quick Vent
- Multitac Wms 1500 NC
- Shell Malleus Fluid GL 65
- Mobil Mobiltac 275
- Bel Ray Molyube Gear Tac 6899
- Ceplattyn KG 10 HMF 1000